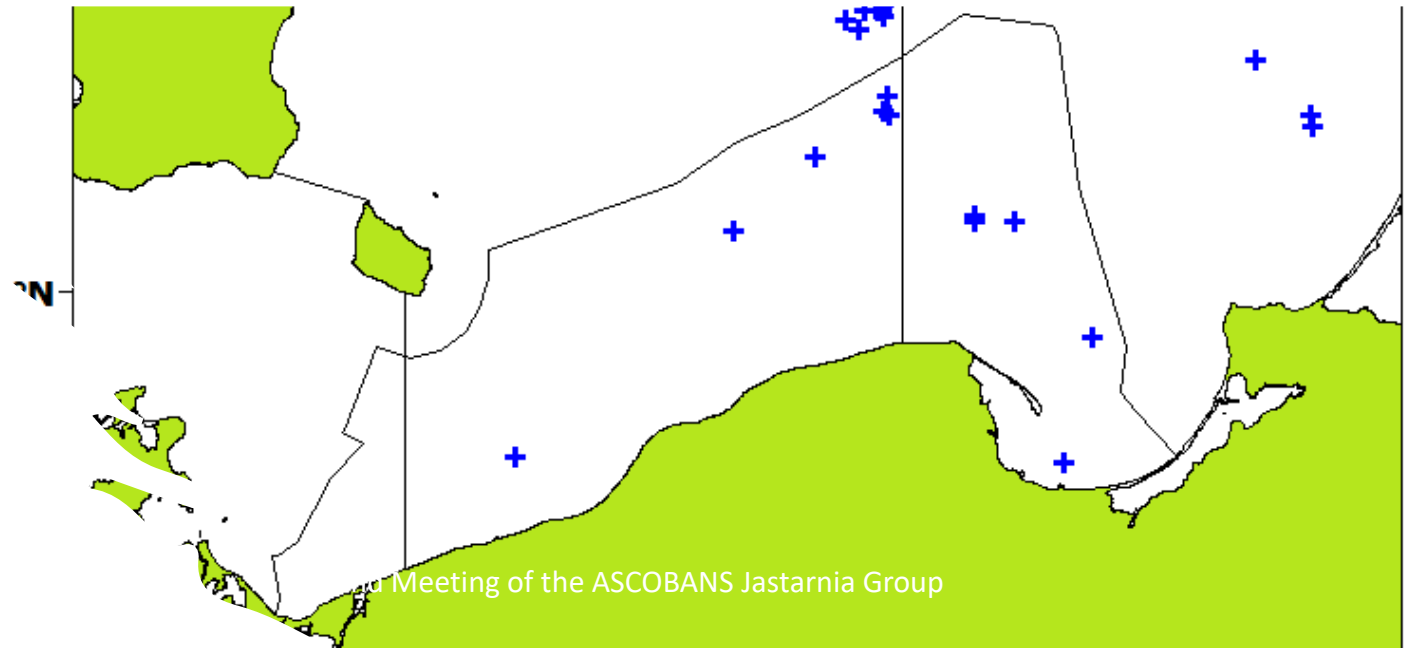


# PL bycatch monitoring 2025 OTM

Bycatch monitoring – pelagic trawl – OTM.

25 days with observers onboard  
on vessels above 15 m

Since 2006 organised by  
NMFRI

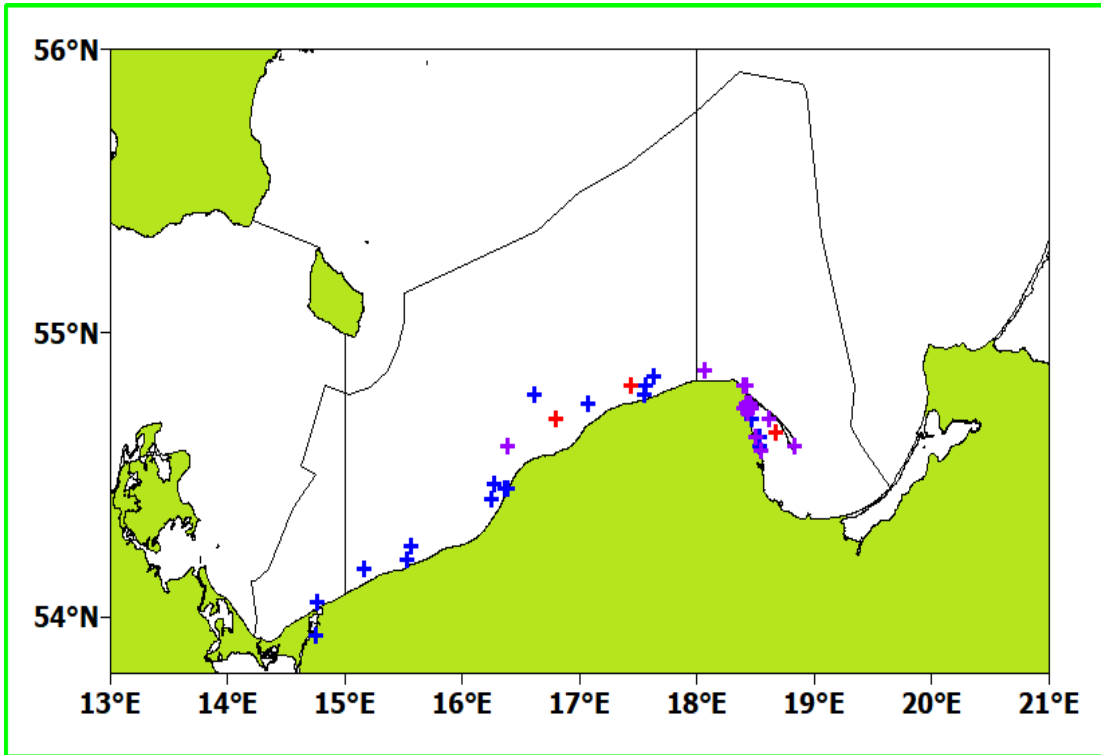


NMFRI

Meeting of the ASCOBANS Jastarnia Group

# PL bycatch monitoring 2025 GNS

NMFRI



vessels above 15m (red marks), vessels below 15 m (blue marks) boats (violet marks).

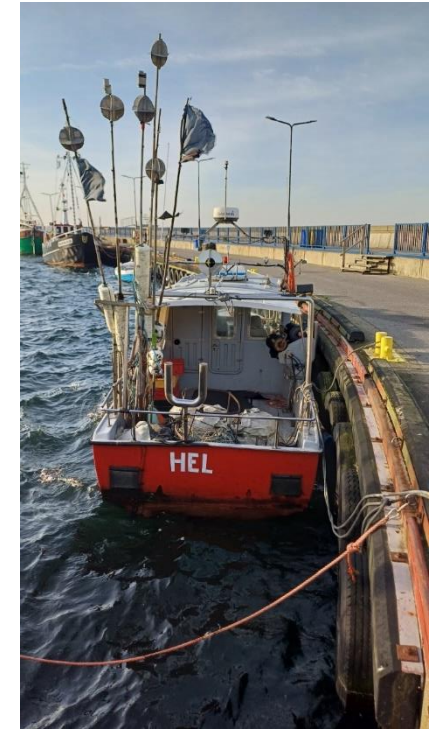
Bycatch monitoring – gillnets – GNS,  
mesh size:  $\varnothing$ 48 mm -  $\varnothing$ 200 mm.

fishing trips on vessels above 15 m,  
below, and on boats

GNS fishing effort coverage by  
observers:

Vessels above 15 m: 1,6% (26)

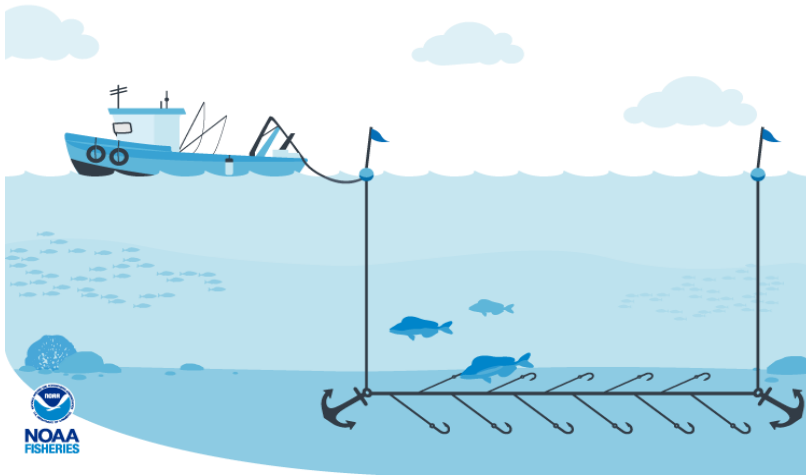
Vessels below 15 m: 0,06% (24),  
0,22% (25), 0,13% (26)



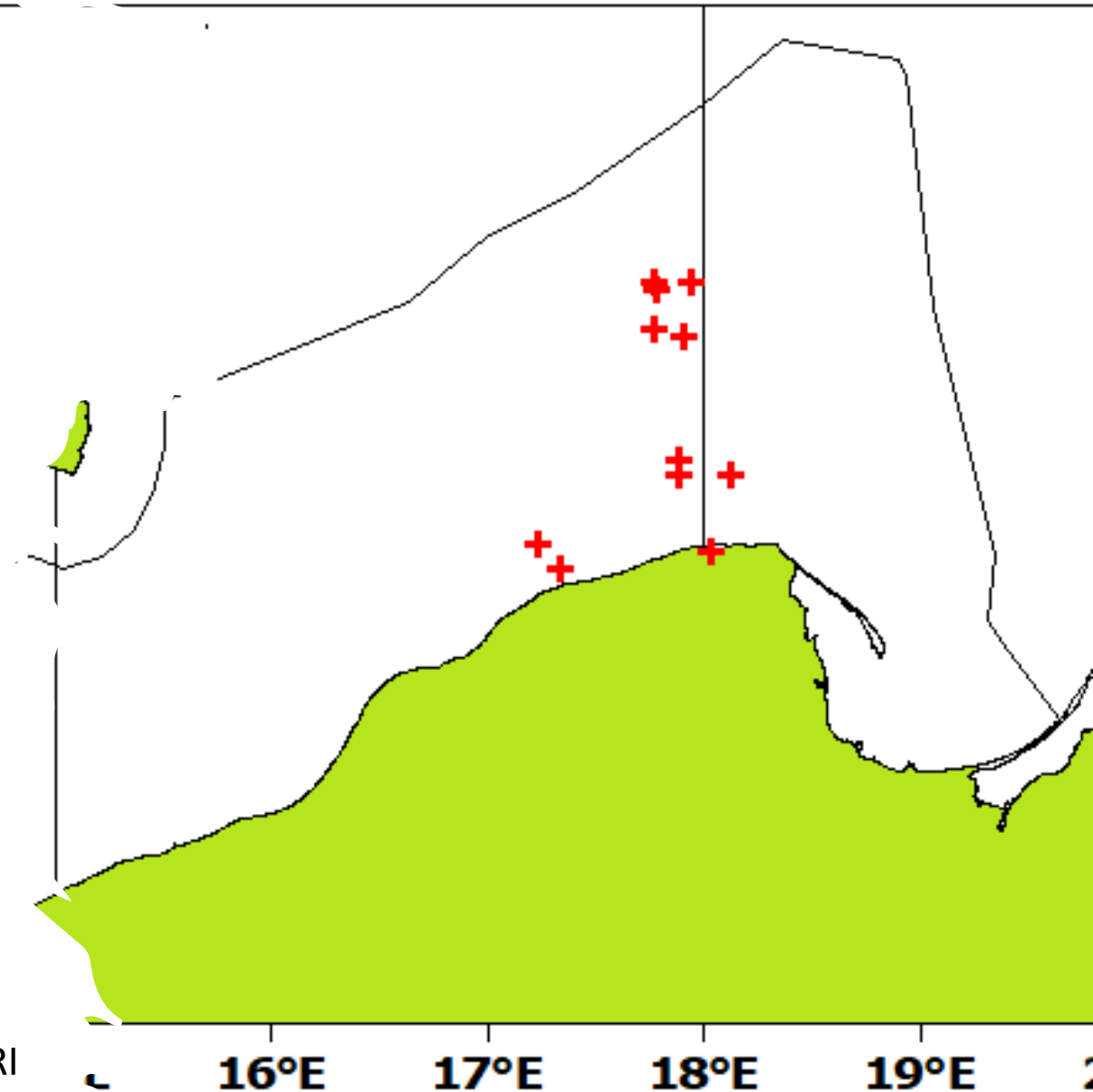
ICES subdivision	Number of days with observations	Number of nets set	Length of the nets (joint) km
24	3	101	5,05
25	16	286	17,17
26	21	610	32,21
<b>Jointly:</b>	<b>40</b>	<b>997</b>	<b>54,43</b>

# PL bycatch monitoring 2025 LLD

Bycatch monitoring – longlines – LLD.  
12 days with bycatch observers  
onboard



NMFRI



# Bycatch mitigation



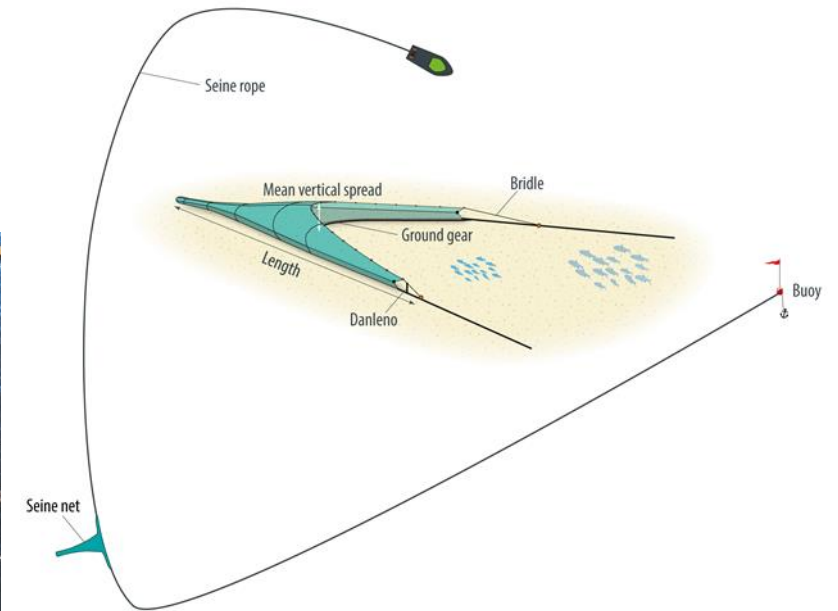
In 2025 trials of **miniseine**  
and **poonton fyke net** in Polish  
Marine waters under EU LIFE  
CIBBRiNA by

National Marine Fisheries  
Research Institute in  
cooperation with fishermen

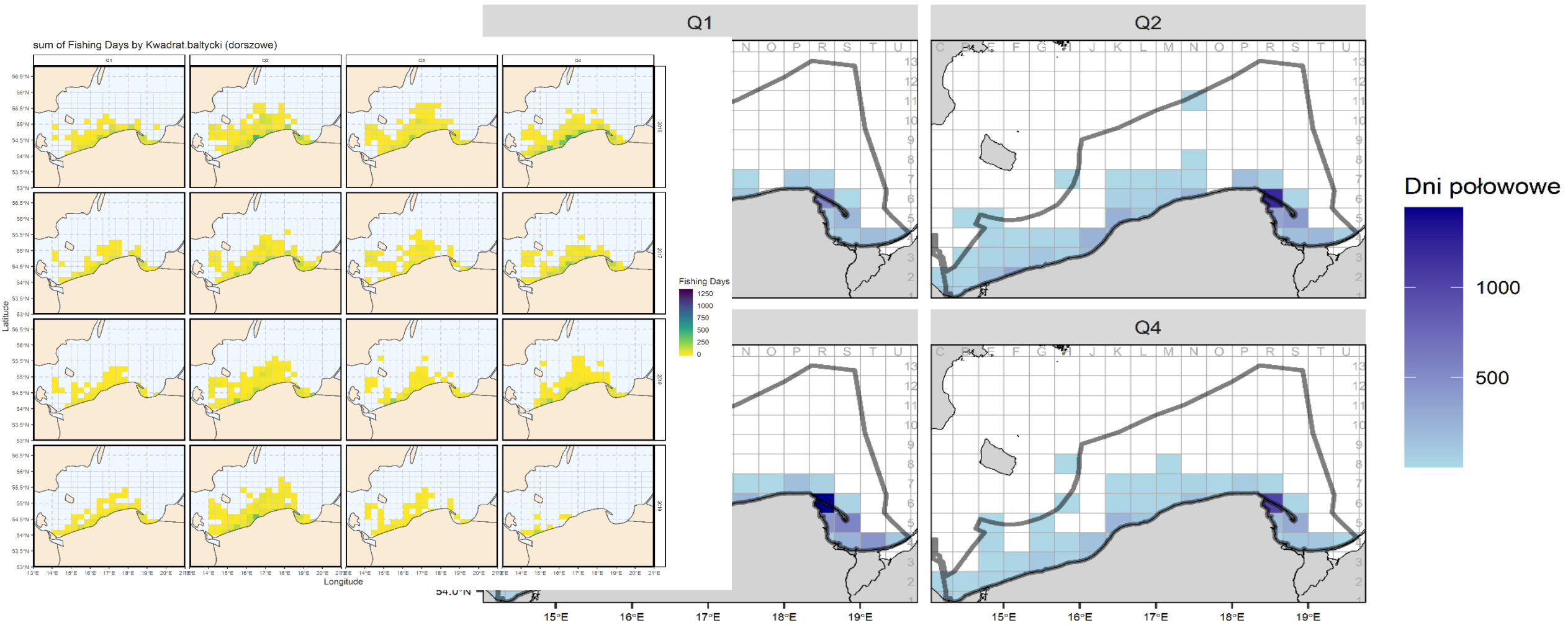
EU LIFE CIBBRiNA



© I. Psuty



# Update on fishing effort - gillnets – PL data for 2024



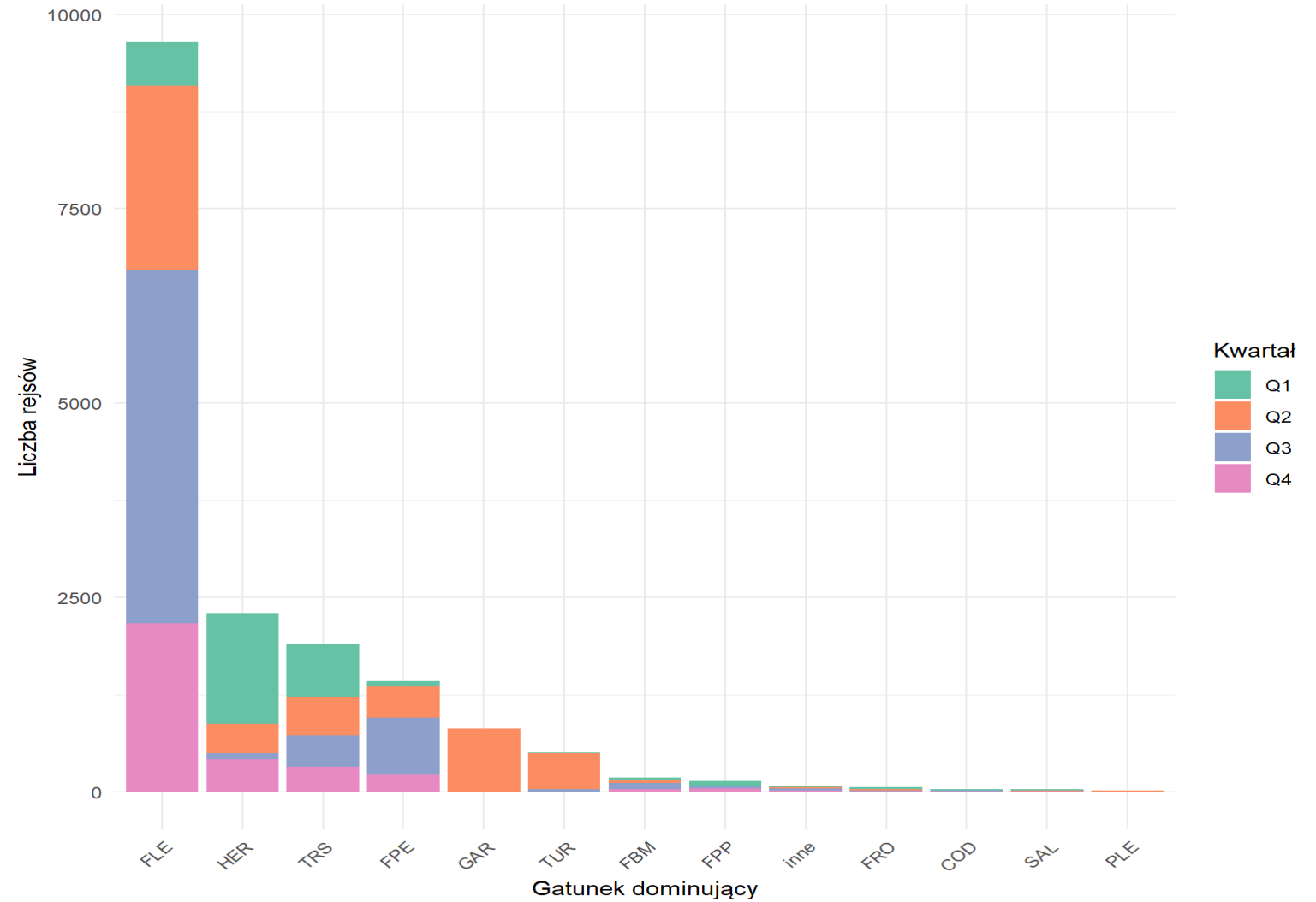
ICES WKEMBYC, 2020

NMFRI, 2020 and 2025

# Update on fishing effort - gillnets – PL data for 2024

Main fish species caught:

Flatfish > herring > sea trout



# PL Mid sea bank WIND FARMS

***EIA proceedings successfully completed and decision on territorial locations approved:***

- **MFW Baltica-1**

Transboundary environmental impact proceedings with Sweden, Denmark, and Finland.

- **MFW Bałtyk I**

Transboundary environmental impact proceedings with Sweden, Denmark and for information with Latvia

***EIA proceedings pending:***

- **MFW Baltica-1+**

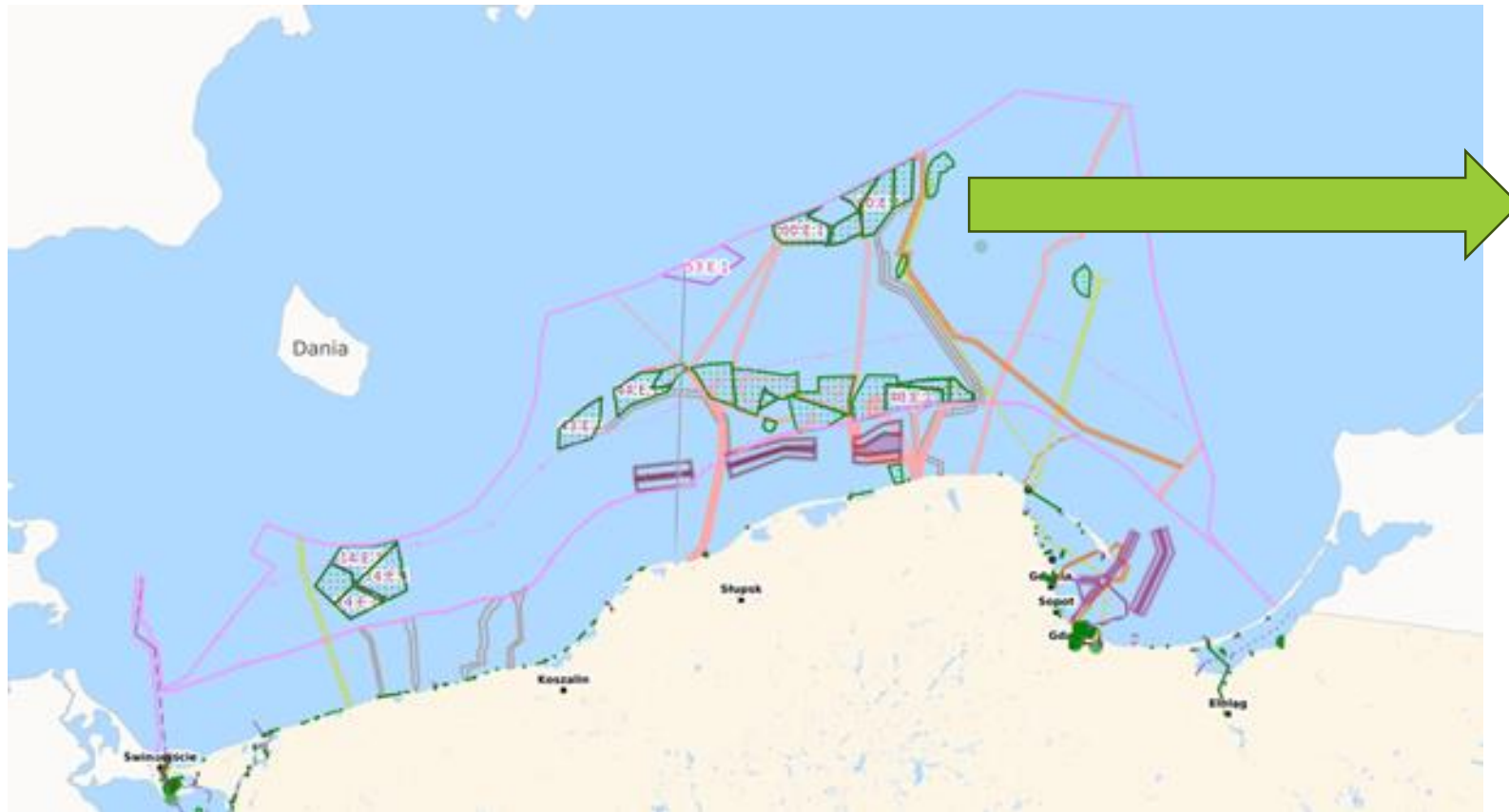
Transboundary environmental impact proceedings with Sweden, Finland and Denmark

- Environmental Impact Assessment documentation in preparation



istockphoto

# Offshore windfarms plans/locations



MFW  
Bałtyk I

MFW  
Baltica 1

MFW  
Baltica 1+